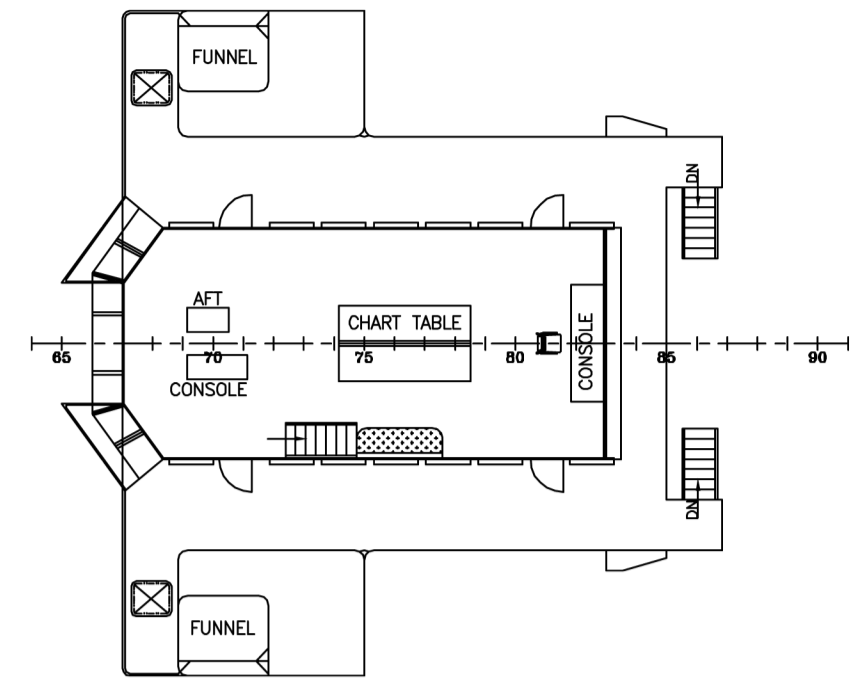
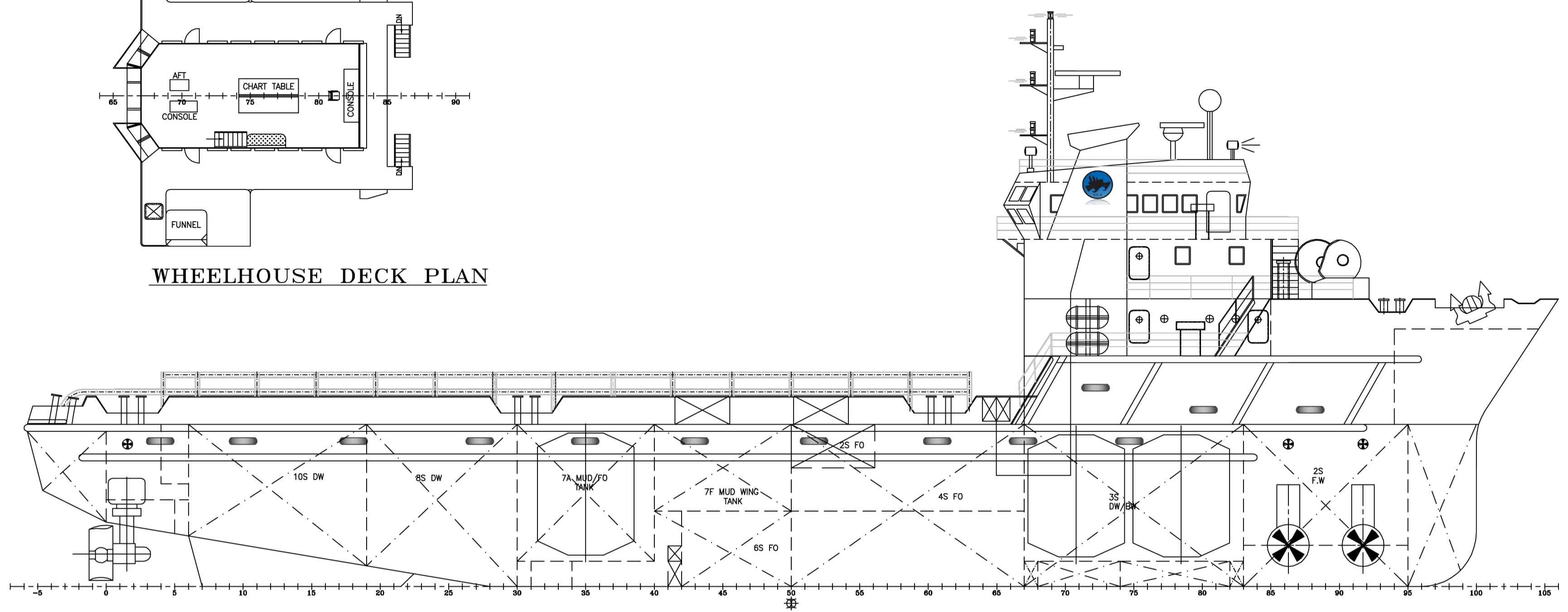


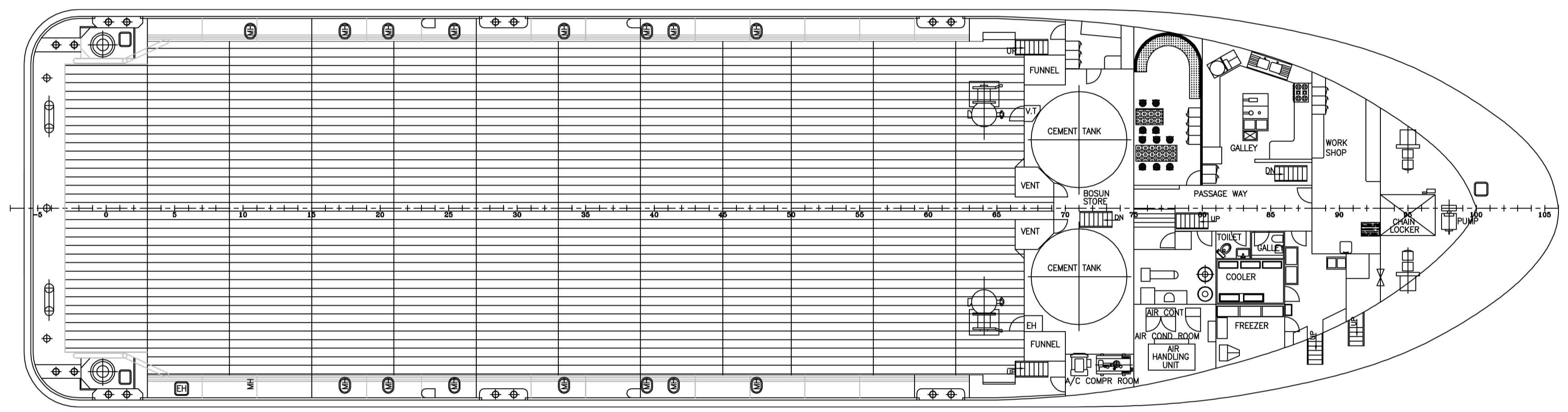
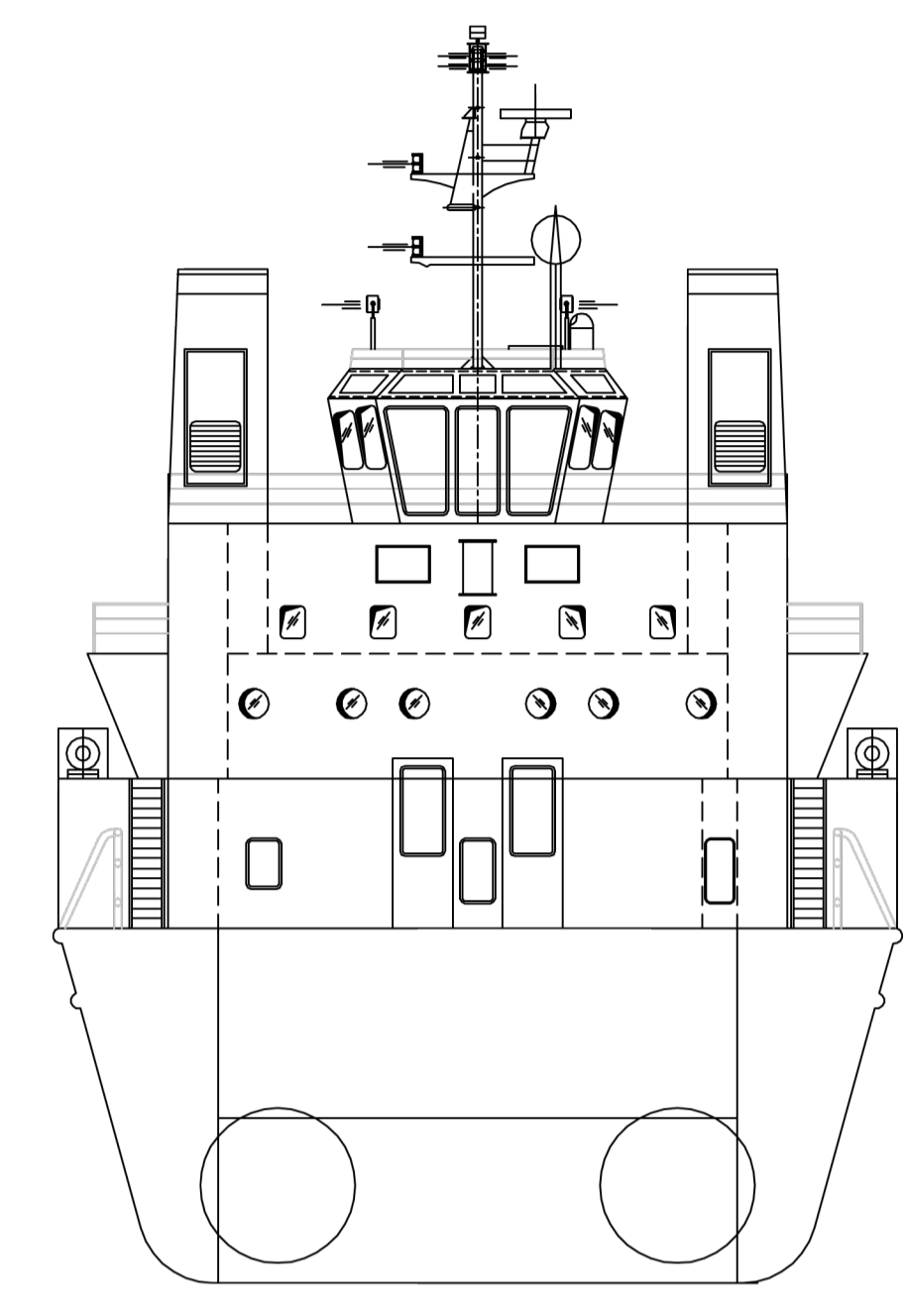
GENERAL ARRANGEMENT - M/V KBM No.4



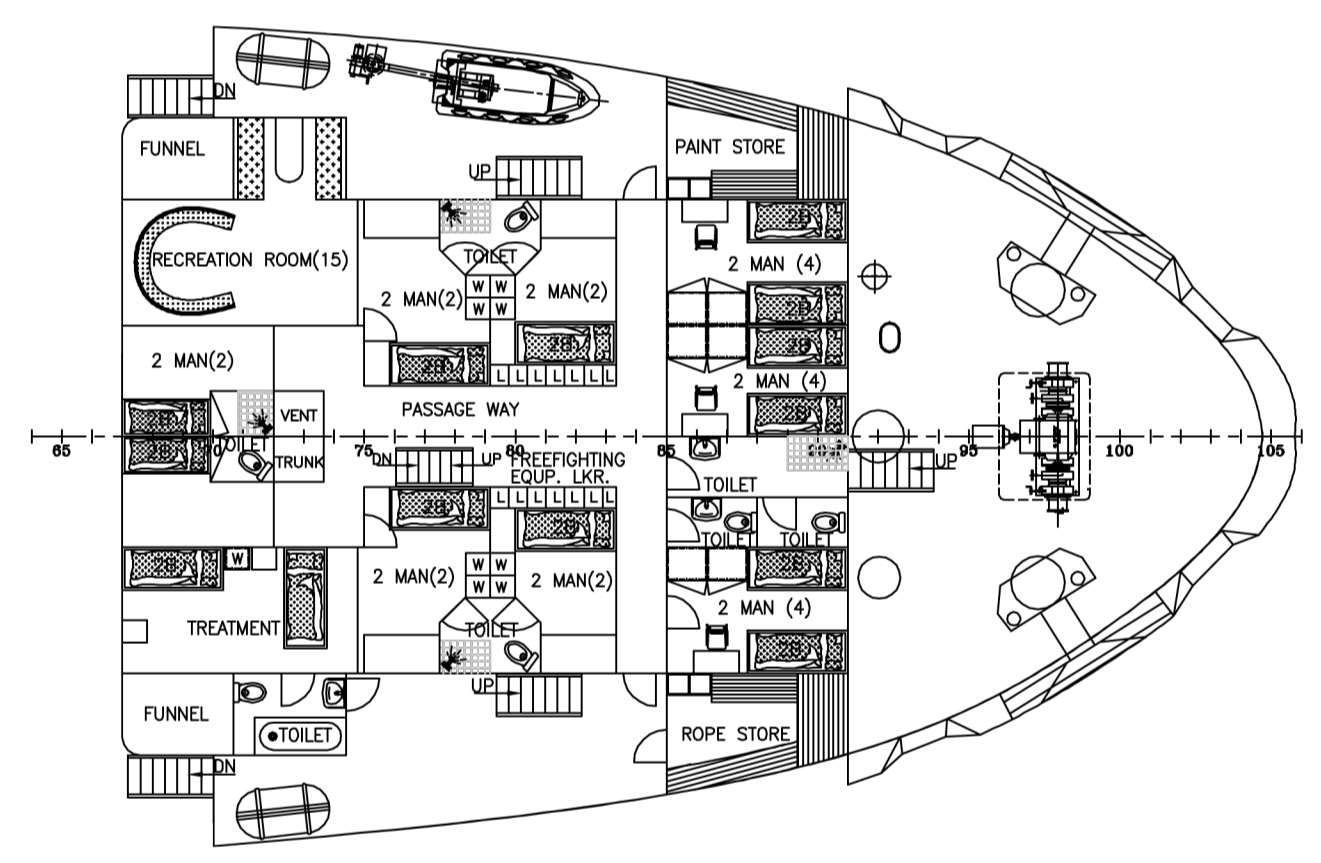
WHEELHOUSE DECK PLAN



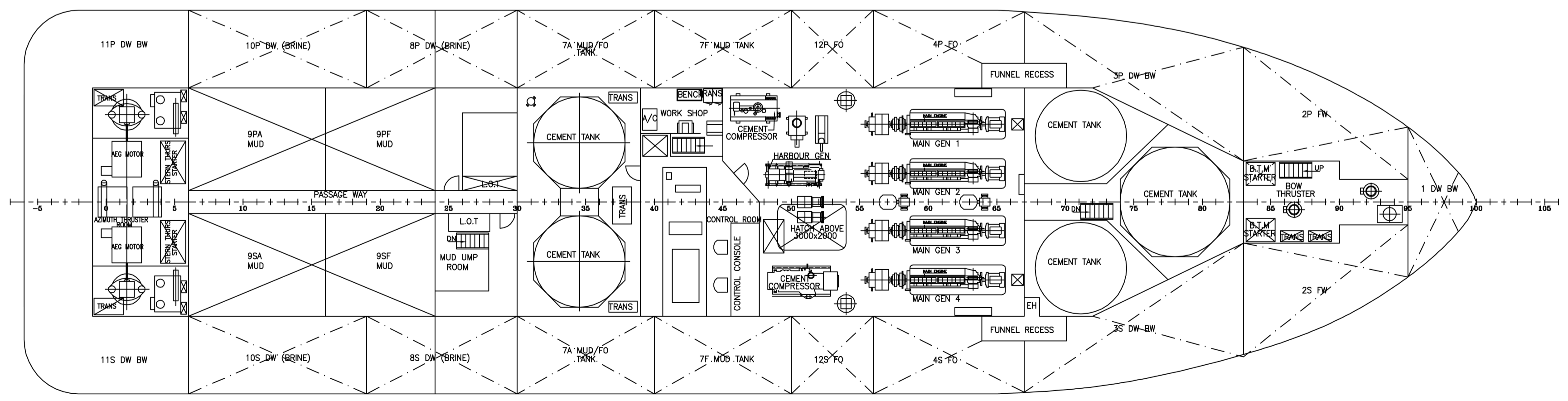
PROFILE



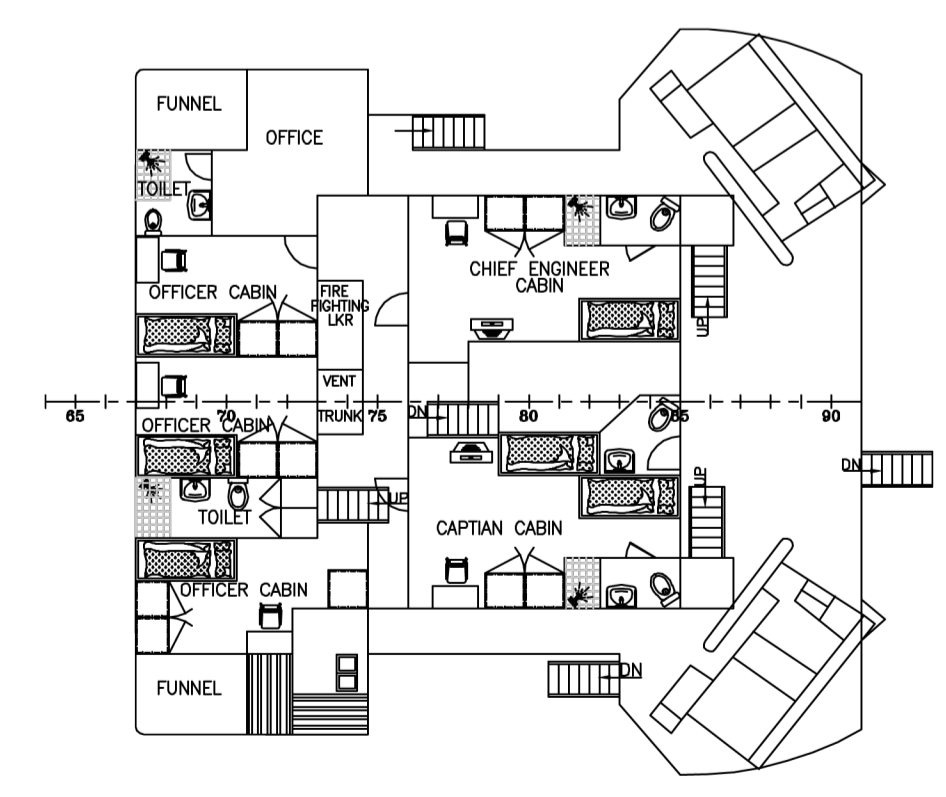
MAIN DECK PLAN



FORECASTLE DECK



TANK TOP PLAN





BOAT DECK

MAIN PARTICULARS	
LENGTH O.A.	67.2m
LENGTH B.P	60.0m
BREADTH MOULDED	16.8m
DEPTH MOULDED	7.1m
MAX.DRAFT	6.07m
DESIGN DRAFT	5.50m
DEADWEIGHT AT MAX. DRAFT	3060 TONS
DEADWEIGHT AT 5.50 DRAFT	2480 TONS
MAX. DECK CARGO ABT	1650 TONS
GROSS REGISTER TONS	Below 1600TONS
SPEED	14.0KNOTS

M/V KBM No.4

REVISIONS			
0	INITIAL ISSUE	22.04.09	GM
REV	DESCRIPTION	DATE	SIGN

	OWNER:	NOOR ALBAHAR SHIP CHARTER LLC
	P.O.Box: 22933, Dubai, U.A.E. Tel: +971-4-2737375 Fax: +971-4-2737509 Website: www.slshipping.co Email: info@slshipping.co	
	DRAWING PREPARED BY:	ARIES MARINE & ENGG. SERVICES
	P.O. BOX - 24496, SHARJAH, U.A.E. Tel: 00971(0)6 5614166, Fax: 00971(0)6 5614167 Website: www.ariesmarine.co.ae, Email: ariesmar@emirates.net.ae	

TITLE:		
GENERAL ARRANGEMENT PLAN		
VESSEL NAME : M/V KBM No.4	DATE : 22.04.09	DWG. No : DN7246/201
DRAWN BY : NAV	JOB No : DN7246	SHEET : 01 OF 01
CHECKED BY : DD	SCALE : 1:150	REV : 0 SIZE : A1